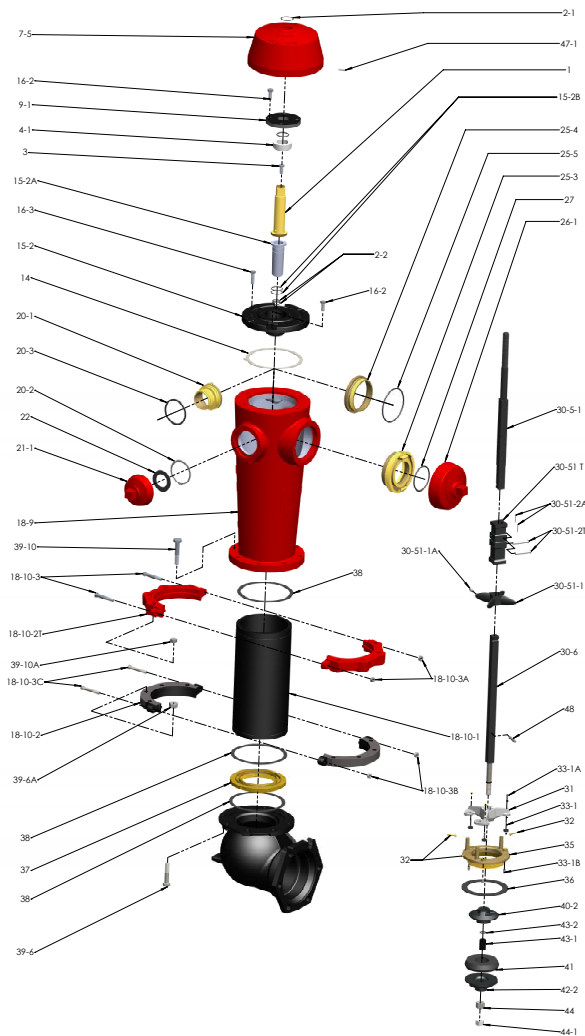
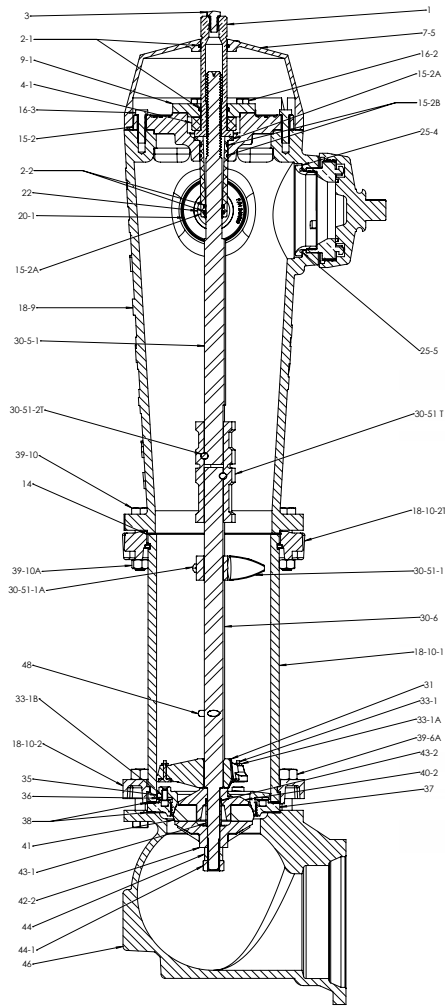


CENTURY FIRE HYDRANT PARTS

with E/M (Easy Maintenance) Operating System



Catalog Number	Part Number	Quantity Per	Description
1	****	1	Operating nut (open left or right)
2-1	200001615	1	Bonnet & housing cover O-ring
2-2	194572	2	Stem seal O-ring (#214)
3	234427	1	Lubricating screw
4-1	364378	1	Thrust bearing
7-5	205	1	CV hydrant bonnet
9-1	132	1	Bearing housing cover
14	604	1	Bearing housing gasket
15-2	372586	1	Bearing housing
15-2a	372816	1	E/M bearing housing sleeve
15-2b	373130	2	Bearing housing O-ring (#129)
16-2	45314	6	Bearing housing cap screw (short)
16-3	45330	4	Bearing housing cap screw (long)
18-9	249556	1	Upper barrel - 2 hose
18-9	240383	1	Upper barrel - 2 hose and pumper
18-10-1	****	1	C.V. lower barrel
18-10-2	281301P	1	CV ductile iron hydrant barrel flange
18-10-2T	306371	1	CV split traffic flange
18-10-3	204072	2	Flange side bolt ground line
18-10-3a	45934	2	Flange side nut ground line
18-10-3b	281832	2	304SS flange side nut, below ground
18-10-3c	281824	2	304SS flange side bolt, below ground

Catalog Number	Part Number	Quantity Per	Description
20-1	****	2	Hose nozzle
20-2	258784	2	Hose nozzle retaining ring
20-3	258792	2	Hose nozzle gasket
21-1	****	2	Hose nozzle cap
22	1805	2	Hose nozzle cap gasket
25-3	****	1	Pumper nozzle
25-4	303364	1	Pumper nozzle retainer
25-5	195956	1	Pumper nozzle O-ring (#352)
26-1	****	1	Pumper cap
27	****	1	Pumper cap O-ring or gasket
30-5-1	265543	1	Upper rod - open left
30-5-1	265551	1	Upper rod - open right
30-6	****	1	Lower rod
30-51T	282383	1	CV fire hydrant breakable rod coupling
30-51-1	218219D	**	CV rod guide
30-51-1a	47155	**	Rod guide set screw
30-51-2T	305456	2	Coupling clevis pin
30-51-2a	195235	2	Coupling cotter pin
31	558	1	Drip lever
32	47414	3	Drip lever cotter pin
33-1	574	3	Drip lever washer
33-1a	247774	3	Drip washer retainer/hex nut
33-1b	345	3	Hydrant seat drain tube

Catalog Number	Part Number	Quantity Per	Description
35	213	1	CV Ø4.5" hydrant seat
36	280	1	CV hydrant seat gasket 4.5"
37	388	1	CV Ø4.5" drain ring
38	000612	3	Barrel and base gasket
39-6	234451-1	8	304SS base flange bolt
39-6a	195048	8	304SS base flange nut
39-10	321826	8	Grade 2 ground flange bolt
39-10a	190939	8	Grade 2 ground flange nut
40-2	450	1	Valve ball top
41	515	1	CV hydrant valve
42-2	485	1	Valve ball bottom, Ø4-1/2 CV hydrant
43-1	294403	1	CV hydrant valve ball top plastic sleeve
43-2	41301	1	Valve sleeve O-ring (#210)
44	142955	1	304SS 3/4-10 hex nut
44-1	376821	1	316SS 3/4-10 hex lock nut
46	****	1	Base (flanged, MJ, or slip on)
47-1	218243	2	Cover restraining knurl pin
48	200001814	1	Stop pin, type E groove, 3/8x2

Parts numbers marked with **** are to be specified by the customer.
 *30-5-1 quantity varies with trench depth



Copyright © 2015 Mueller Canada. All Rights Reserved.
 The trademarks, logos and service marks displayed in this document herein are the property of Mueller Canada, its affiliates or other third parties. These products are intended for use in potable water applications. Please contact your Mueller Canada Sales or Customer Service Representative concerning any other application(s).



CANADA VALVE 4"/5" (CENTURY) - EM

Ref. Stelem	Description	Ref. manufacturer
0201	Operating nut	1
0203	Lubricating screw	3
0205	Bonnet	7-5
0208	Bonnet retaining pin	47-1
0209	Bonnet "O" ring	2-1
0210-em	Thrust bearing	4-1
0212	Bearing housing cover	9-1
0213	Housing cover cap screw	16-2
0214	Thrust bearing cover "O" ring	2-1
0215-em	Bearing housing	15-2 / 15-2A
0216	Cone and housing cover cap screw	16-3
0217	Housing gasket	14
0218	Cone "O" ring	2-2
0218-em	Upper rod sleeve "O" ring	15-2B
0219	EM bearing housing sleeve	15-2A
0220	Upper rod 24" open left	30-5-1
0225	Hose nozzle 2 1/2"	20-1
0226	Hose nozzle retaining ring	20-2
0227	Hose nozzle gasket	20-3
0230	Hose nozzle cap	21
0231	Hose nozzle cap gasket 2 1/2"	22
0235	Pumper nozzle	25-3
0236	Pumper nozzle retainer	25-4
0237	Pumper nozzle "O" ring	25-5
0240	Pumper nozzle cap	26-1
0241	Pumper nozzle cap gasket	27
0245	Coupling	30-51
0246	Clevis and cotter pin for rod coupling	30-51-2T
0247	Safety coupling	30-51T
0250-2	Upper barrel 2H1P	18-9
0255	Safety flange (8 holes)	18-10-2T
0256	Barrel flange side bolt and nut	18-10-3 & 3A
0258	Ground flange bolt and nut	39-10
0259	Barrel & base gasket	38
0260	Lower stem	30-9
0265	Hydrant rod guide	30-51-1
0266	Rod guide set screw	30-51-1A
0267	Stop pin	48
0269	Main valve seat 4.5"	35-4
0270	Main valve seat 5"	35-5
0271	Main valve seat gasket	36
0272	Brass drain plug	35-1
0275	Drip lever w/wshr + retain	31
0276	Valve gasket and ring	33-1
0277	Drip valve cotter pin	32
0278	Valve ball top 4.5"	40-2
0280	Valve ball disc 4.5" # S2-41.CV4	41-4
0281	Main valve disc 5"	41-5
0285	Valve ball bottom 4.5"	42-2
0286	Valve ball "O" ring	43-2
0287	Valve ball lead ring	43
0288	Valve ball plastic sleeve	43-1
0289	Rod lock nut	44
0290	Rod lock nut	44